

DumpsQuestion

Over **61842+** Satisfied Customers

About Us

The screenshot shows the DumpsQuestion website interface. At the top, there's a navigation bar with the logo and menu items: HOME, CERTIFICATIONS, HOW TO PAY?, GUARANTEE, FAQ, and CART (0). Below the navigation bar, a large banner features the text 'TRY BEFORE YOU BUY' and 'Download a free sample of any of our exam questions and answers'. Three bullet points highlight the benefits: '24/7 customer support. Secure shopping site', 'Free One year updates to match real exam scenarios', and 'If you failed your exam after buying our products we will refund the full amount back to you.' The background of the banner shows a group of people in a meeting.

Select a vendor... | Select an exam... | Your email address | Free Download

What Clients Say About Us

Disclaimer Policy: The site does not guarantee the content of the comments. Because of the different time and the changes in the scope of the exam, it can produce different effect. Before you purchase the dump, please carefully read the product introduction from the page. In addition, please be advised the site will not be responsible for the content of the comments and contradictions between users.

“ Good things should be shared together. I pass the HPE0-J75. The dumps is good for examination. ”



Honey

“ Do not hesitate about the dumps. It is very good valid dumps. Yes, I am sure it is valid for this times. Worthy it. ”



Hardy

<http://www.dumpsquestion.com>

Professional Dump Collection & Excellent Exam Questions & Latest Questions

Exam : **NSE7_EFW-7.2**

Title : Fortinet NSE 7 - Enterprise Firewall 7.2

Vendor : Fortinet

Version : DEMO

NO.1 Refer to the exhibits, which contain the network topology and BGP configuration for a hub. Exhibit A.

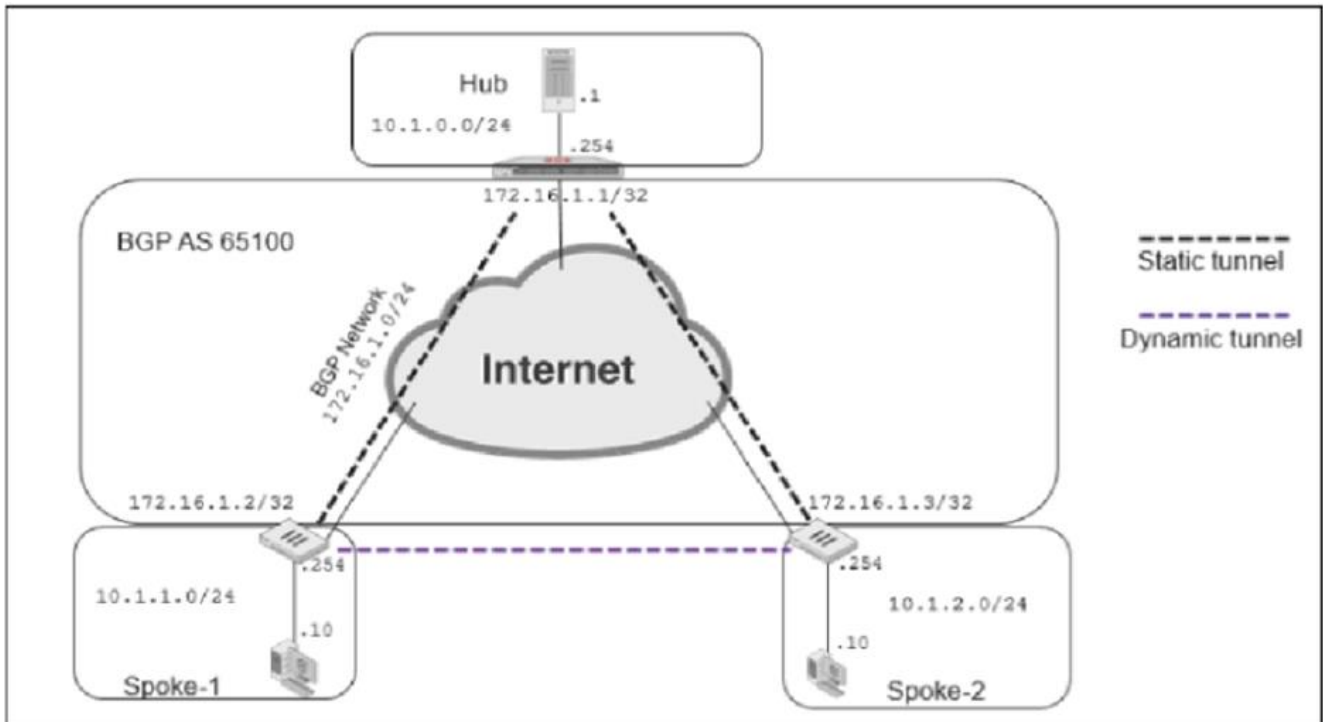


Exhibit B.

```
Hub # show router bgp
config router bgp
  set as 65100
  set router-id 172.16.1.1
  config neighbor-group
    edit "advpn"
      set remote-as 65100

      set route-reflector-client disable
    next
  end
  config neighbor-range
    edit 1
      set prefix 172.16.1.0 255.255.255.0
      set neighbor-group "advpn"
    next
  end
  config network
    edit 1
      set prefix 10.1.0.0 255.255.255.0
    next
  end
  ....
end
```

An administrator is trying to configure ADVPN with a hub and spoke VPN setup using iBGP. All the VPNs are up and connected to the hub. The hub is receiving route information from both spokes over iBGP; however the spokes are not receiving route information from each other.

What change must the administrator make to the hub BGP configuration so that the routes learned from one spoke are forwarded to the other spoke?

- A. Configure the hub as a route reflector
- B. Configure auto-discovery-sender on the hub
- C. Add a prefix list to the hub that permits routes to be shared between the spokes
- D. Enable route redistribution under config router bgp

Answer: B

NO.2 In which two ways does fortiManager function when it is deployed as a local FDS? (Choose two)

- A. It can be configured as an update server a rating server or both
- B. It provides VM license validation services
- C. It supports rating requests from non-FortiGate devices.
- D. It caches available firmware updates for unmanaged devices

Answer: A B

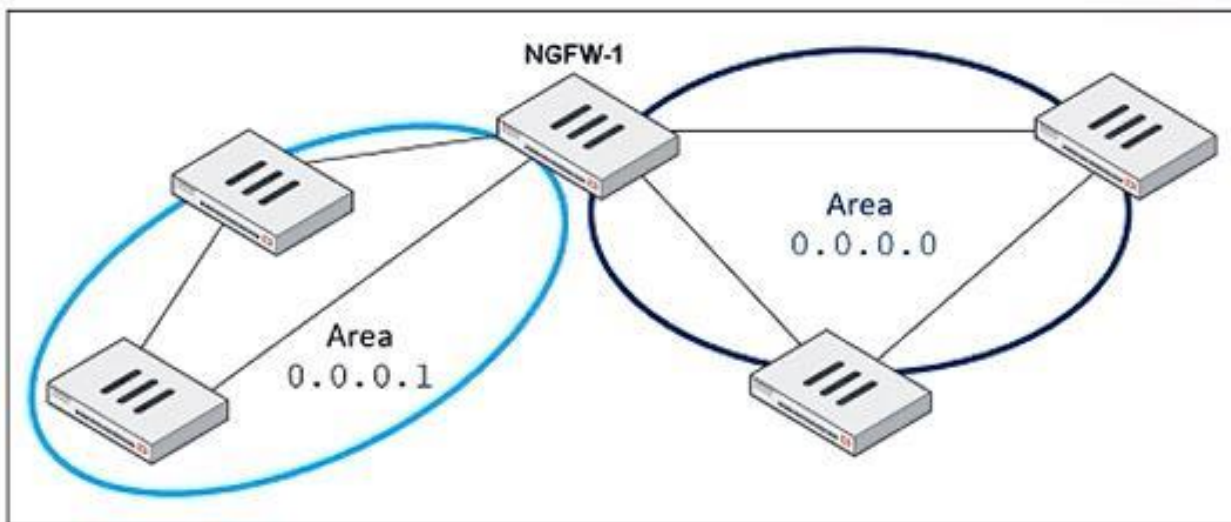
Explanation:

When deployed as a local FortiGuard Distribution Server (FDS), FortiManager functions in several capacities.

It can act as an update server, a rating server, or both, providing firmware updates and FortiGuard database updates. Additionally, it plays a crucial role in VM license validation services, ensuring that the connected FortiGate devices are operating with valid licenses. However, it does not support rating requests from non- FortiGate devices nor cache firmware updates for unmanaged devices.

Fortinet FortiOS Handbook: FortiManager as a Local FDS Configuration

NO.3 Refer to the exhibit, which shows an OSPF network.



Which types of link-state advertisements (LSA) will NGFW-1 send, if it is a backup designated router (BDR)?

- A. NGFW-1 will send type 1 and type 2 LSAs.
- B. NGFW-1 will send type 1 and type 3 LSA.
- C. NGFW-1 will send type 1 and type 4 LSA.
- D. NGFW-1 will send type 1 and type 5 LSA.

Answer: B

NO.4 Exhibit.

```
# diagnose webfilter fortiguard cache dump

Saving to file [/tmp/urcCache.txt]
Cache Contents:
-----
Cache Mode:    TTL
Cache DB Ver:  23.6106

Domain |IP          DB Ver  T URL
34000000|34000000  23.6106  P Bhttp://training.fortinet.com/
25000000|25000000  23.6106  E Bhttps://twitter.com/...

# get webfilter categories
...
g07 General Interest - Business:
    31 Finance and Banking
...
    51 Government and Legal Organizations
    52 Information Technology
```

Refer to the exhibit, which shows the output from the webfilter fortiguard cache dump and webfilter categories commands.

Using the output, how can an administrator determine the category of the training.fortinet.com am website?

- A. The administrator must convert the first three digits of the IP hex value to binary
- B. The administrator can look up the hex value of 34 in the second command output.
- C. The administrator must add both the Pima in and lphex values of 34 to get the category number
- D. The administrator must convert the first two digits of the Domain hex value to a decimal value

Answer: B

* Option B is correct because the administrator can determine the category of the training.fortinet.com website by looking up the hex value of 34 in the second command output. This is because the first command output shows that the domain and the IP of the website are both in category (Hex) 34, which corresponds to Information Technology in the second command output¹.

* Option A is incorrect because the administrator does not need to convert the first three digits of the IP hex value to binary. The IP hex value is already in the same format as the category hex value, so the administrator can simply compare them without any conversion².

* Option C is incorrect because the administrator does not need to add both the Pima in and lphex values of 34 to get the category number. The Pima in and lphex values are not related to the category number, but to the cache TTL and the database version respectively³.

* Option D is incorrect because the administrator does not need to convert the first two digits of the Domain hex value to a decimal value. The Domain hex value is already in the same format as the category hex value, so the administrator can simply compare them without any conversion².

References: =

* 1: Technical Tip: Verify the webfilter cache content⁴

* 2: Hexadecimal to Decimal Converter⁵

* 3: FortiGate - Fortinet Community6

* : Web filter | FortiGate / FortiOS 7.2.0 - Fortinet Documentation7

NO.5 Refer to the exhibit.

```
config router prefix-list
  edit filter-subnets
    config rule
      edit 1
        set prefix 10.1.0.0/16
        set action deny
      next
      edit 2
        set prefix 10.0.0.0/8
        set action permit
        set ge 16
      next
    end
  end
end
```

The exhibit shows a prefix list configuration

What can you conclude from the above prefix-list configuration?

- A. The prefix 10.10.0.0/16 will be denied
- B. The prefixes 10.10.0.0/16 and 10.0.0.0/16 will be denied
- C. The prefix 10.10.10.0/24 will be permitted
- D. The prefix 10.0.0.0/8 will be permitted

Answer: C

NO.6 Refer to the exhibit, which shows config system central-management information.

```
config system central-management
  set type fortimanager
  set allow-push-firmware disable
  set allow-remote-firmware-upgrade disable
  set fmg "10.1.0.241"
  config server-list
    edit 1
      set server-type update
      set server-address 10.1.0.241
    next
  end
  set include-default-servers disable
end
```

Which setting must you configure for the web filtering feature to function?

- A. Add server. fortiguard. net to the server list.
- B. Configure securewf.fortiguard. net on the default servers.
- C. Set update-server-location to automatic.
- D. Configure server-type with the rating option.

Answer: D

Explanation:

For the web filtering feature to function effectively, the FortiGate device needs to have a server configured for rating services. The rating option in the server-type setting specifies that the server is used for URL rating lookup, which is essential for web filtering. The displayed configuration does not list any FortiGuard web filtering servers, which would be necessary for web filtering. The setting set include-default-servers disable indicates that the default FortiGuard servers are not being used, and hence, a specific server for web filtering (like securewf.fortiguard.net) needs to be configured.

NO.7 You created a VPN community using VPN Manager on FortiManager. You also added gateways to the VPN community. Now you are trying to create firewall policies to permit traffic over the tunnel however, the VPN interfaces do not appear as available options.

- A. Create interface mappings for the IPsec VPN interfaces before you use them in a policy.
- B. Refresh the device status using the Device Manager so that FortiGate populates the IPsec interfaces
- C. Configure the phase 1 settings in the VPN community that you didnt initially configure. FortiGate automatically generates the interfaces after you configure the required settings
- D. install the VPN community and gateway configuration on the fortigate devices so that the VPN interfaces appear on the Policy Objects on fortimanager.

Answer: D

Explanation:

To use the VPN interfaces in a policy, you need to install the VPN community and gateway

configuration on the FortiGate devices first. This will create the VPN interfaces on the FortiGate and sync them with FortiManager. References:

- * Creating IPsec VPN communities
- * VPN | FortiGate / FortiOS 7.2.0

NO.8 Exhibit.

CLI script configuration

Script Name	Static Route
Comments	<div style="border: 1px solid #ccc; height: 100px; width: 100%;"></div> <div style="text-align: right; font-size: small;">0/255</div>
Type	CLI Script
Run script on	Remote FortiGate Directly (...)
Script details	<pre># conf rout stat # edit 0 # set gateway 10.20.121.2 # set priority 20 # set device "wan1" # next # end</pre>

Refer to the exhibit, which contains a CLI script configuration on FortiManager.

An administrator configured the CLI script on FortiManager. Which statement is true based on the script configuration?

- A.** The script successfully added a static route with gateway 10.20.121.2 on the managed device
- B.** CLI scripts must start with #.
- C.** The commands are missing `d3_cmd` at beginning
- D.** The CLI scripts failed to execute because of an incomplete command

Answer: D